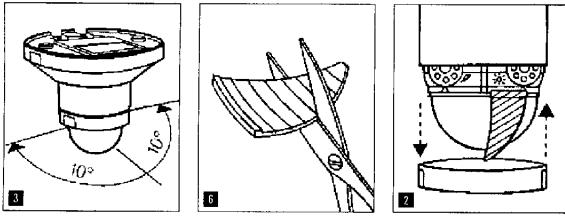
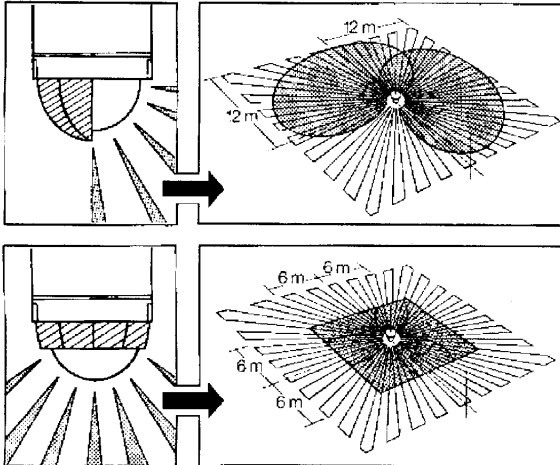


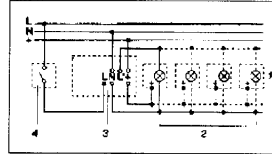
Reach setting/Adjustments



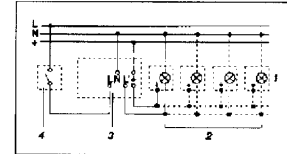
Reach setting/Examples



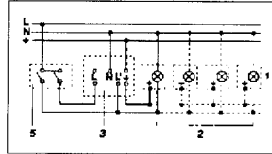
Wiring Examples



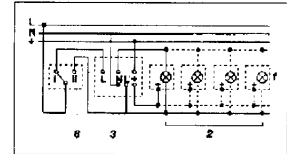
1. Fixture without neutral conductor



2. Fixture with neutral conductor



3. Connection via series switch for manual and automatic operation



4. Connection to double-throw switch for permanent light and automatic operation
Setting I: automatic operation
Setting II: manual operation for permanent light

Important: the unit cannot be switched off, only optional operation between settings I and II.

- 1) e.g. 1-4 x 100 W filament bulbs
- 2) consumer lighting max. 1000 W (refer to Technical specifications)
- 3) IS 360 D TRIO connection terminals
- 4) indoor switch
- 5) indoor series switch, manual, automatic
- 6) indoor double-throw switch, automatic, permanent light

Maintenance/care

The motion sensor is suitable for automatic switching of lights or alarms. The unit is not suitable for special burglary alarm systems, since it lacks the sabotage protection prescribed for

this purpose. Weather can affect operation of the sensor. Strong gusts of wind, snow, rain and hail can cause switching errors, since the sudden temperature changes cannot be distinguished from

heat sources. The detection lens can be cleaned with a damp cloth (without detergents) if dirty.

Troubleshooting

Malfunction	Cause	Remedy
IS 360 D TRIO without power	<ul style="list-style-type: none"> ■ Fuse has blown; not switched on ■ Short-circuit 	<ul style="list-style-type: none"> ■ Replace fuse, switch on mains switch, check wiring with voltage tester ■ Check connections
IS 360 D TRIO does not switch on	<ul style="list-style-type: none"> ■ Twilight setting in night-time mode during daytime operation ■ Bulb burned out ■ Power switch off ■ Fuse blown ■ Detection zone not correctly adjusted 	<ul style="list-style-type: none"> ■ Adjust setting ■ Replace light bulb ■ Switch on ■ Replace fuse, check connection if necessary ■ Readjust
IS 360 D TRIO does not switch off	<ul style="list-style-type: none"> ■ Continued movement within the detection zone ■ Switched on light is within detection zone and switches on again as a result of temperature change ■ Set to continuous operation by indoor series switch 	<ul style="list-style-type: none"> ■ Check zone and readjust if necessary or apply shroud ■ Readjust zone or apply shroud ■ Series switch to automatic
IS 360 D TRIO keeps switching ON/OFF	<ul style="list-style-type: none"> ■ Switched on light is within detection zone ■ Animals moving in detection zone 	<ul style="list-style-type: none"> ■ Adjust detection zone or apply shrouds, increase distance ■ Adjust zone or apply shrouds
IS 360 D TRIO switches on when it should not	<ul style="list-style-type: none"> ■ Wind is moving trees and bushes in the detection zone ■ Cars in the street are detected ■ Sudden temperature changes due to weather (wind, rain, snow) or exhaust air from fans or open windows 	<ul style="list-style-type: none"> ■ Adjust zone or apply shrouds ■ Adjust zone or apply shrouds ■ Adjust detection zone or install in a different place

Technical specifications

Dimensions (H x W x D):	100 x 120 x 120 mm
Output:	<ul style="list-style-type: none"> ■ Filament bulbs, 1000 W max., operating on 230 V AC ■ Fluorescent lamp, 500 W max., at $\cos \phi = 0.5$, inductive load at 230 V AC ■ 6 x 58 W each max., C ≤ 132 µF at 230 V AC *1)
Connection:	230 - 240 V, 50 Hz
Angle of coverage:	360° (with 180° angle of aperture)
Pivoting range of the sensor:	Fine adjustment ± 10°
Reach:	max. 12 m (electronically stabilised)
Time setting:	10 sec. - 15 min.
Twilight setting:	2 - 2000 lux
IP rating:	IP 54
Safety class:	II
Temperature ranging from:	- 20° C to + 50° C

*1) Fluorescent lamps, low-energy bulbs, LED lights with electronic ballast (total capacity of all connected ballasts below the value specified).